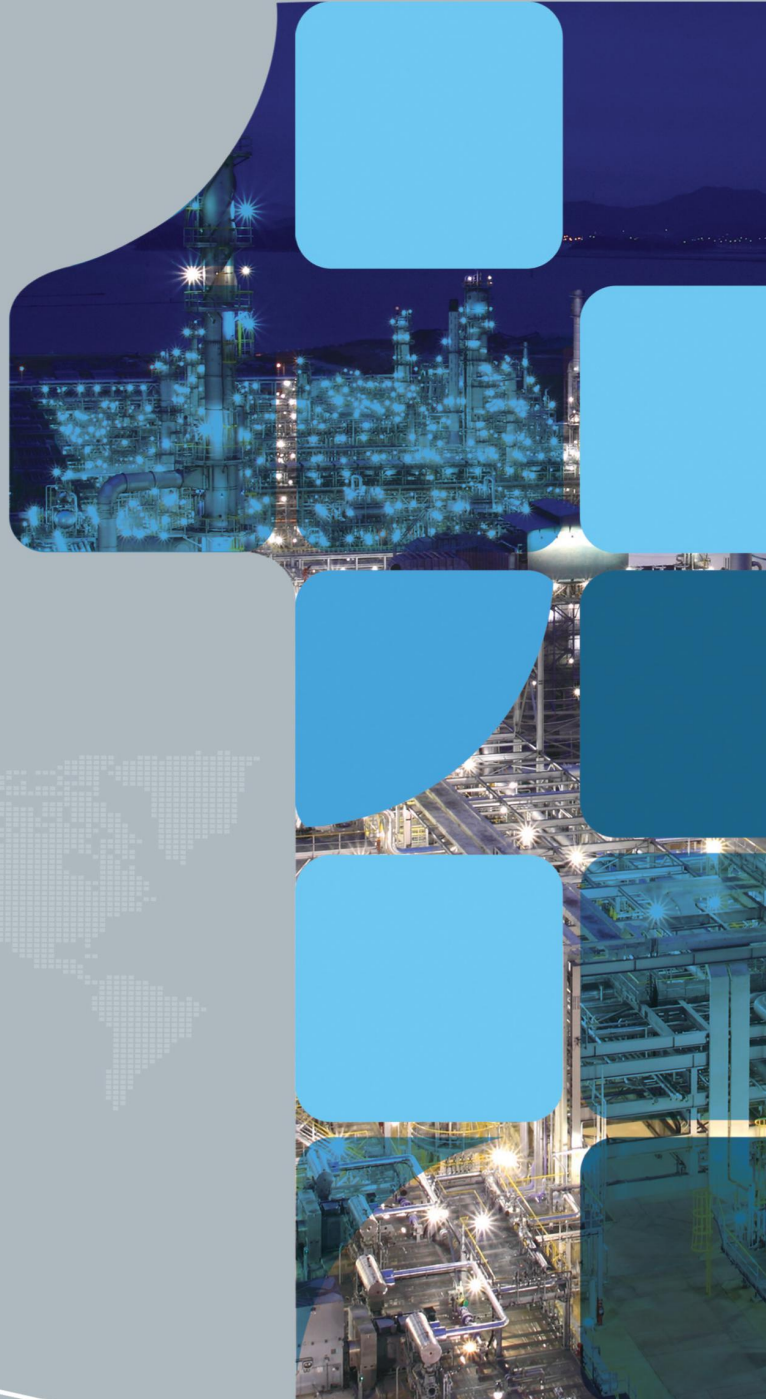
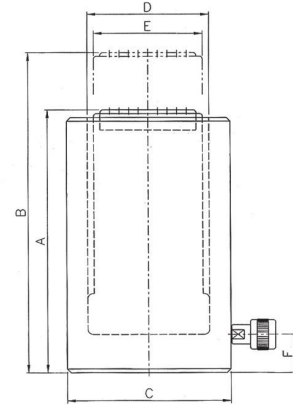


# Hydraulic Power for Industry

- Cylinders
- Pumps
- Tools
- Punch



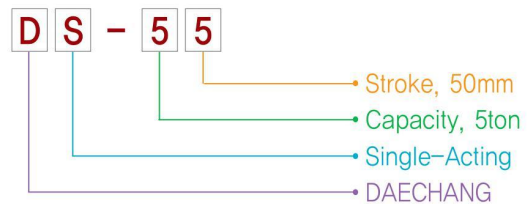
# SINGLE-ACTING CYLINDERS



## ■ 특징 Feature

- Capacity : 5~100tons
- Stroke : 50~200mm
- Maximum Pressure : 700kgf/cm<sup>2</sup>
- Hydraulic Coupler : 3/8" PT
- Pump : To use 30% more than oil Capacity of Cylinder

## ■ How to understand Model No.

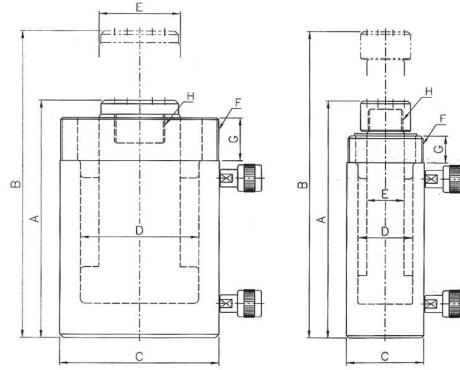


## ■ Specifications

Model	Cylinder Capacity (tons)	Stroke (mm)	Cylinder Effective Area(cm <sup>2</sup> )	Oil Cylinder (cc)	Retracted	Extended	Cylinder Out Dia.	Cylinder Bore Dia.	Piston Rod Dia.	Base to Inlet port	Weight (kgs)
					A	B					
DS-55	5	50	6.38	35	134	184	38	28.5	25	25	1.1
DS-510		100		70	184	274					1.4
DS-515		150		106	234	384					1.8
DS-520		200		140	284	484					2.2
DS-105	10	50	15.2	76	133	183	58	44	38	20	2.1
DS-1010		100		152	183	283					3.4
DS-1015		150		228	233	383					4.8
DS-1020		200		304	283	483					5.6
DS-205	20	50	33.18	166	165	215	88	65	57	35	7
DS-2010		100		332	215	315					8.8
DS-2015		150		498	265	415					11
DS-2020		200		664	315	515					12.7
DS-305	30	50	44.18	220	172	222	102	75	65	35	9.8
DS-3010		100		400	222	322					12.5
DS-3015		150		660	272	422					16
DS-3020		200		880	322	522					17.5
DS-505	50	50	70.88	355	173	223	127	95	85	35	15.8
DS-5010		100		710	223	323					20
DS-5015		150		1070	273	423					23.5
DS-5020		200		1425	323	523					27.7
DS-10010	100	100	132.7	1330	226	326	168	130	110	40	34
DS-10015		150		1991	286	436					44.5

※ The above options are subject to change without prior notice

# DOUBLE-ACTING CYLINDERS



## ■ 특징 Feature

- Capacity : 5~1000tons
- Stroke : 150~300mm
- Maximum Pressure : 700kgf/cm<sup>2</sup>
- Hydraulic Coupler : 3/8" PT
- Faster Retraction under hydraulic power
- Removable plunger caps

## ■ How to understand Model No. 5, 10, 20, 30



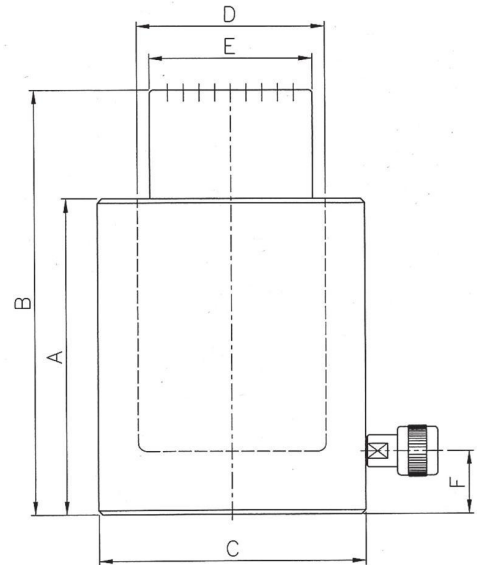
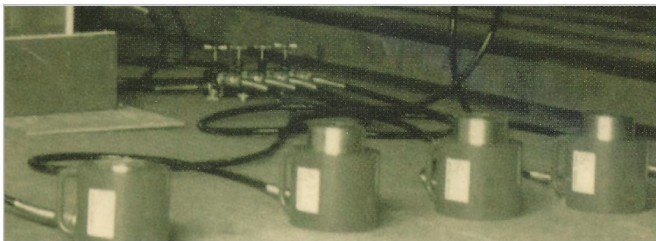
## ■ Specifications

Model	Cylinder Capacity (tons)	Stroke (mm)	Cylinder Effective Area(cm <sup>2</sup> )	Oil Cylinder (cc)	Retracted Height	Extended Height	Cylinder Out Dia. C	Cylinder Bore Dia. D	Piston Rod Dia. E	Color Thread F	Color Thread Length G	Piston Thread H	Weight (kgs)
					A	B							
DDS-515	5	150		144	285	435	45	35	25	M45×P1.5	25	M20P1.5	3.3
DDS-530		300		288	433	733							4.8
DDS-1015	10	150		228	314	464	62	44	30	M60×P2.0	30	M28×P2	4.5
DDS-1030		300		456	464	764							9
DDS-2015	20	150		497.7	363	513	88	65	45	M85×P2.5	50	M40×P2	13.5
DDS-2030		300		995.4	513	813							20
DDS-3015	30	150		662.6	398	548	105	75	55	M100×P2.5	55	M50×P2	24
DDS-3030		300		1325.2	548	848							33
DDS-5015	50	150		1063	343	493	128	95	65	M127×P2.5	45	M40×P2	30
DDS-5030		300		2126	493	793							50
DDS-10015	100	150		1990	352	502	178	130	100	M175×P3	50	M65×P3	64
DDS-10030		300		3980	502	802							83
DDS-15015	150	150		3207	381	531	218	165	120	M215×P3.5	55	M70×P4	95
DDS-15030		300		6414	51	831							127
DDS-20015	200	150		4253	400	550	248	190	135	M245×P4	60	M80×P4	129
DDS-20030		300		8506	550	850							169
DDS-30015	300	150		6506	433	853	315	235	170	M315×P4	70	M80×P4	230
DDS-30030		300		13012	583	883							298
DDS-50015	500	150		10603	475	625	405	300	215	-	-	904	490
DDS-50030		300		21206	625	925							590
DDS-80015	800	150		17462	550	700	525	685	-	-	-	-	782
DDS-80030		300		34924	700	1000							989
DDS-100015	1000	150		21783	610	760	585	430	-	-	-	-	1216
DDS-100030		300		43566	760	1060							1533

※ The above options are subject to change without prior notice



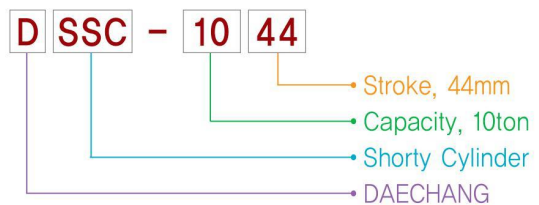
# SHORTY CYLINDERS



## ■ 특징 Feature

- Capacity : 10~200tons
- Stroke : 44~50mm
- Maximum Pressure : 700kgf/cm<sup>2</sup>
- Hydraulic Coupler : 3/8" PT
- Compact, flat design for use where other cylinders will not fit.

## ■ How to understand Model No.



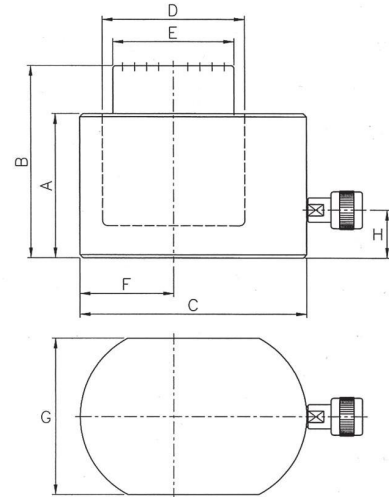
## ■ Specifications

Model	Cylinder Capacity (tons)	Stroke (mm)	Cylinder Effective Area(cm <sup>2</sup> )	Oil Cylinder (cc)	Retracted Height	Extended Height	Cylinder Out Dia.	Cylinder Bore Dia.	Piston Rod Dia.	Base to Inlet port	Weight (kgs)
					A	B	C	D	E	F	
DSSC-1044	10	44	15.2	66	99	143	68	44	38	17	2.6
DSSC-2044	20	44	28.3	124	99	143	88	60	51	17	4.3
DSSC-3044	30	44	44.2	194	99	143	105	75	64	17	6.2
DSSC-5050	50	50	63.6	318	109	159	125	90	75	19	10.2
DSSC-10050	100	50	132.7	663	139	189	168	130	100	27	21
DSSC-15050	150	50	201	1005	170	220	208	160	135	33	41.1
DSSC-20050	200	50	283.5	1417	180	230	245	190	170	38	60.3

※ The above options are subject to change without prior notice



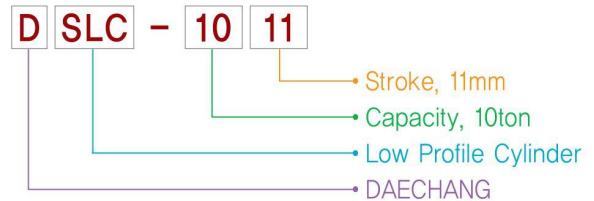
# LOW PROFILE CYLINDERS



## ■ 특징 Teature

- Capacity : 5~150tons
- Stroke : 6~16mm
- Maximum Pressure : 700kgf/cm<sup>2</sup>
- Hydraulic Coupler : 3/8" PT
- DAECHANG low profile cylinders are designed for use where there is a minimum of clearance for insertion of cylinders
- From 10 to 150 tons capacity single-acting spring Return

## ■ How to understand Model No.

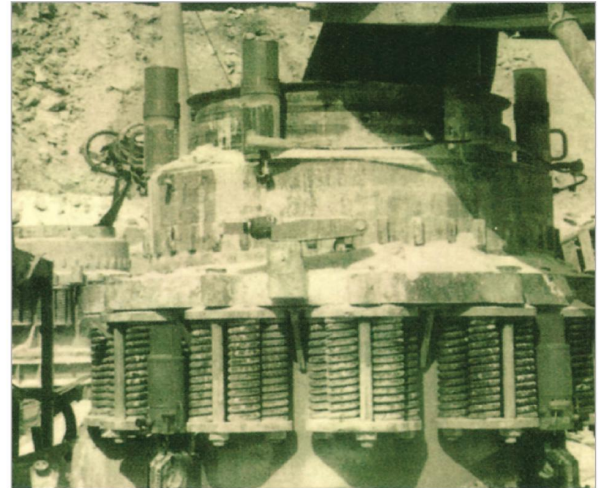


## ■ Specifications

Model	Cylinder Capacity (tons)	Stroke (mm)	Cylinder Effective Area(cm <sup>2</sup> )	Oil Cylinder (cc)	Retracted Height	Extended Height	Cylinder Out Dia.	Cylinder Bore Dia.	Piston Rod Dia.	Plunger to Base	Cylinder Dimension	Base to Inlet port	Weight (kgs)
					A	B							
DSL-56	5	6	6.16	3.7	40	46	60	28	25	22	42	21	0.8
DSL-1011	10	11	15.2	16	45	56	85	44	38	29	56	21	1.5
DSL-2011	20	11	28.3	31	52	63	102	60	54	42	76	21	2.7
DSL-3013	30	13	41.85	53	59	72	115	73	64	48	95	21	4.2
DSL-5016	50	16	60.8	99	67	83	140	88	75	58	114	21	6.9
DSL-7516	75	16	103.87	164	79	95	165	115	85	70	140	21	11
DSL-10016	100	16	126.7	203	86	102	180	127	95	78	152	25	14.7
DSL-15016	150	16	201	317	100	116	215	160	115	97	190	24	25

※ The above options are subject to change without prior notice

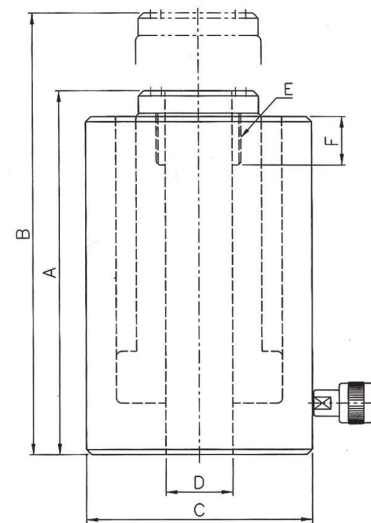
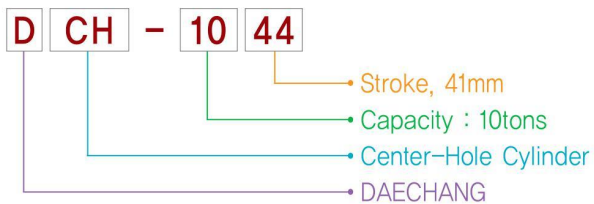
# SINGLE-ACTING CENTER HOLE CYLINDERS



## ■ 특징 Feature

- Capacity : 10~100tons
- Stroke : 41~75mm
- Maximum Pressure : 700kgf/cm<sup>2</sup>
- Hydraulic Coupler : 3/8" PT
- Designed for use with screws, rods, cables and Pullers

## ■ How to understand Model No.

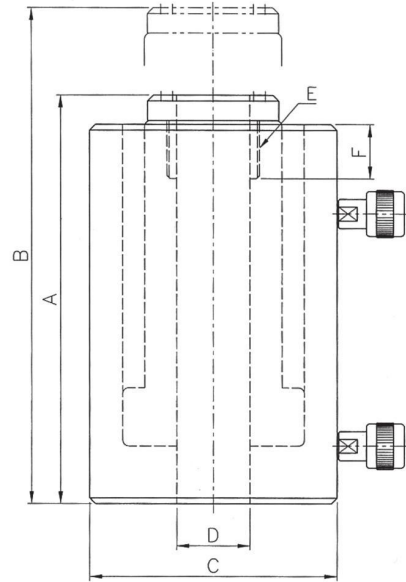


## ■ Specifications

Model	Cylinder Capacity (tons)	Stroke (mm)	Cylinder Effective Area(cm <sup>2</sup> )	Oil Cylinder (cc)	Retracted Height	Extended Height	Cylinder Out Dia. C	Cylinder Bore Dia. D	Piston Rod Dia. E	Base to Inlet port F	Weight (kgs)
					A	B					
DCH-1041	10	41	17.6	70.5	121	162	70	20	-	-	2.8
DCH-2050	20	50	31.67	158.4	162	212	98	27	1 9/16	24	7.6
DCH-3063	30	63	47.7	300.6	179	242	115	33	M48×P1.5	20	10.9
DCH-5075	50	75	85.5	650	249	324	158	54	M70×P2	28	27.2
DCH-10075	100	75	143.13	1049	254	329	216	80	M103×P2	28	52.5

※ The above options are subject to change without prior notice

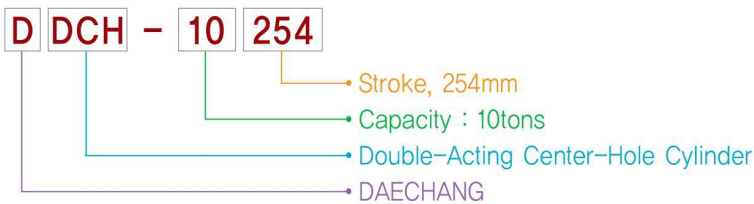
# DOUBLE-ACTING CENTER HOLE CYLINDERS



## ■ 특징 Teature

- Capacity : 10~100tons
- Stroke : 156~254mm
- Maximum Pressure : 700kgf/cm<sup>2</sup>
- Hydraulic Coupler : 3/8" PT
- Designed for use with screws, rods, cables, etc.

## ■ How to understand Model No.



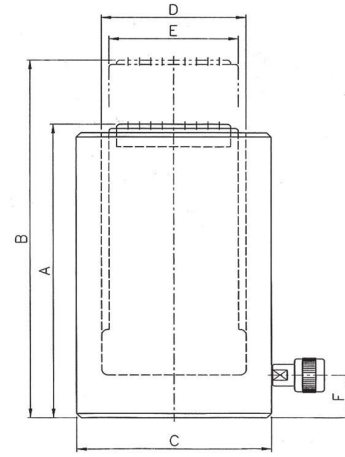
## ■ Specifications

Model	Cylinder Capacity (tons)	Stroke (mm)	Cylinder Effective Area(cm <sup>2</sup> )	Oil Cylinder (cc)	Retracted Height	Extended Height	Cylinder Out Dia. C	Center Hole Dia. D	Color Thread E	Color Thread Length F	Weight (kgs)
					A	B					
DDCH-10254	10	254	14.4	365	406	660	70	20	M32xP1.5	20	11
DDCH-30210	30	210	44.2	928	425	635	115	33	M54xP2.5	50	28
DDCH-50156	50	156	85.5	1106	380	536	158	54	M74xP2.0	36	42
DDCH-100168	100	168	140.39	2230	382	550	215	80	M16xP3.0	50	79

※ The above options are subject to change without prior notice



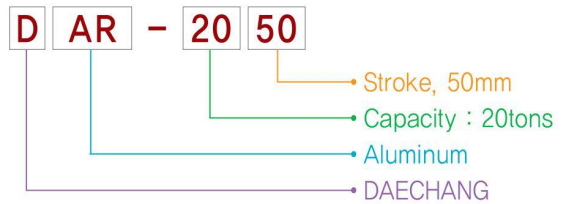
# ALUMINUM CYLINDERS



## ■ 특징 Feature

- Capacity : 20~150tons
- Stroke : 50~150mm
- Maximum Pressure : 700kgf/cm<sup>2</sup>
- Hydraulic Coupler : 3/8" PT
- DAECHANG Aluminum Cylinder are almost half the weight of steel cylinders.

## ■ How to understand Model No.

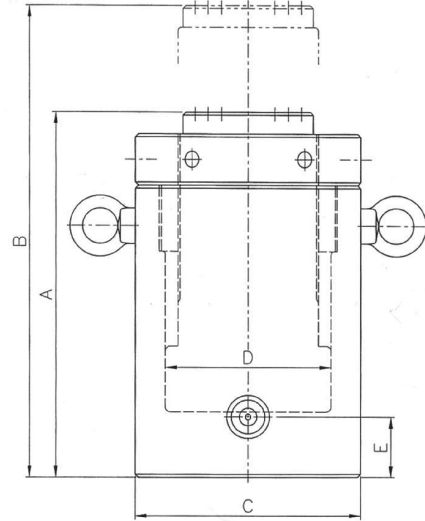


## ■ Specifications

Model	Cylinder Capacity (tons)	Stroke (mm)	Cylinder Effective Area(cm <sup>2</sup> )	Oil Cylinder (cc)	Retracted Height	Extended Height	Cylinder Out Dia. C	Cylinder Bore Dia. D	Piston Rod Dia. E	Base to Inlet port F	Weight (kgs)
					A	B					
DAR-2050	20	50		145	150	200	89	60	54	28	3.2
DAR-20100		100		290	20	300					4.1
DAR-20150		150		435	250	400					4.8
DAR-3050	30	50		220	168	218	108	75	65	35	5.1
DAR-30100		100		440	218	318					6.4
DAR-30150		150		660	268	418					7.5
DAR-5050	50	50		355	182	23	134	95	85	35	28.7
DAR-50100		100		708	232	332					10.8
DAR-50150		150		1063	282	432					12.9
DAR-10050	100	50		660	193	243	189	130	110	40	16.5
DAR-100100		100		1320	243	343					19.5
DAR-100150		150		1980	293	443					23
DAR-15050	150	50		1005	208	258	238	160	135	45	27
DAR-150100		100		2010	258	358					33.4
DAR-150150		150		3016	308	458					39.8

※ The above options are subject to change without prior notice

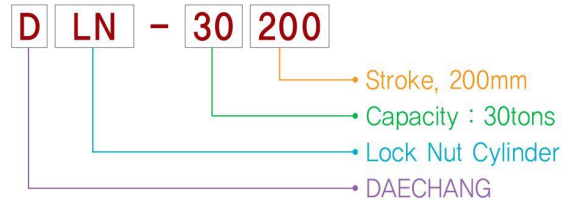
# LOCK NUT CYLINDERS



## ■ 특징 Feature

- Capacity : 30~200tons
- Stroke : 200~230mm
- Maximum Pressure : 700kgf/cm<sup>2</sup>
- Hydraulic Coupler : 3/8" PT
- Cylinders are load return and spring return
- Particularly use in the building industry to support a bridge during construction

## ■ How to understand Model No.



## ■ Specifications

Model	Cylinder Capacity (tons)	Stroke (mm)	Cylinder Effective Area(cm <sup>2</sup> )	Oil Cylinder (cc)	Retracted Height	Extended Height	Cylinder Out Dia.	Cylinder Bore Dia.	Base to Inlet port	Weight (kgs)
					A	B	C	D	E	
DLN-30200	30	200	38.4	883	365	565	102	75	35	23
DLN-50200	50	200	63.6	1141	385	585	127	95	40	38
DLN-100230	100	230	132.7	3292	475	705	168	130	50	75
DLN-150230	150	230	201	4918	537	767	225	165	60	164
DLN-200230	200	230	268.8	6562	552	782	255	190	65	224

※ The above options are subject to change without prior notice

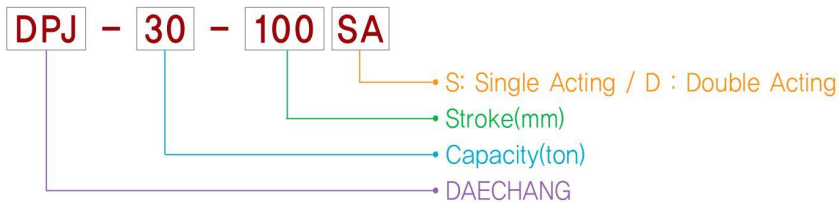
# ALUMINUM PULLING JACK



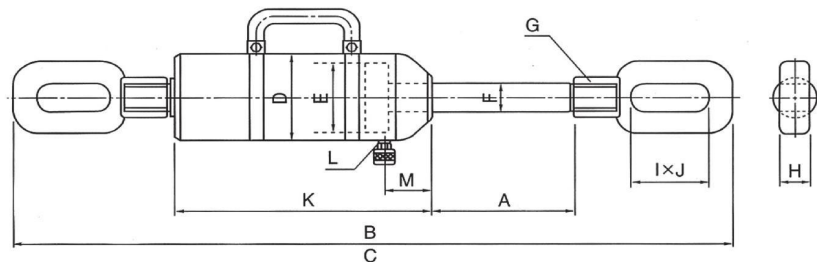
## ■ 특징 Teature

- For filed construction and repair.
- Available in steel Cylinder.
- 건설작업 및 보수공사용으로 사용합니다.

## ■ How to understand Model No.



## ■ 외형치수도 DIMENSION



## ■ Specifications

Capacity		30ton			50ton		
Model		DPJ 30-100	DPJ 30-150	DPJ 30-200	DPJ 50-100	DPJ 50-150	DPJ 50-200
Stroke(mm)	A	100	150	200	100	150	200
Min. Length(mm)	B	880	930	980	935	985	1035
Max. Length(mm)	C	980	1080	1180	1035	1135	1235
Ram Effective Area(cm <sup>2</sup> )			37.7			71.3	
Outside Dia(mm)	D		108			152	
Piston Dia(mm)	E		80			110	
Rod Dia(mm)	F		40			55	
Rod End Screw	G		M36×P2			M48×P2	
Clevis Thickness	H		45			53	
Clevis Hole	I×J		50×110			62×120	
Cylinder Length	K	405	455	505	440	490	540
Oil Port(PT)	L		3/8"			1/2"	
Return			Spring			Spring	
Coupler Position(mm)	M		50			60	
Oil Capacity(cc)		377	566	754	713	1070	1426

※ The above options are subject to change without prior notice



# PROPELLER JACK

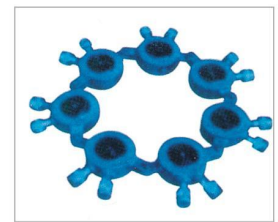
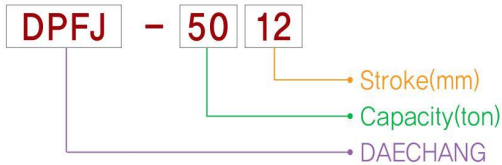


## ■ 특징 Teature

• This is the jack for fitting the propeller by pressure.  
Possible to get maximum power even narrow area by conecting many small rams.

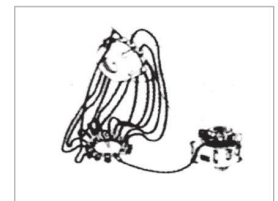
• propeller를 가압하여 Fitting하는 Jack입니다. 좁은 Space에도 최대의 힘을 발휘할 수 있는 소형Ram을 여러개로 연결하여 이용하고 분리하여 개별적으로 또다른 목적의 용도에는 널리 사용할 수 있습니다.

## ■ How to understand Model No.

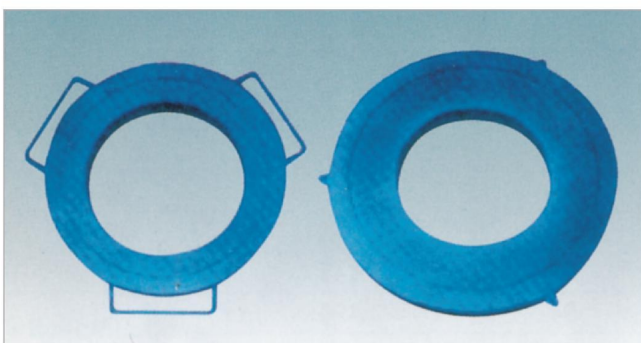


## ■ Specifications

Model	Capacity(ton)	Stroke(mm)	Closed Height(mm)	Ram Area(cm <sup>2</sup> )	Max Pressure(kg/cm <sup>2</sup> )	Operation
DPFJ-2012	50	12	85	70.8	700	Electric Pump & Hand Pump
DPFJ-10015	100	15	100	143.1	700	
DPFJ-20020	200	20	130	298.6	700	
DPFJ-10010	100	10	50	50.2	2000	
DPFJ-20010	200	10	60	103.8	2000	



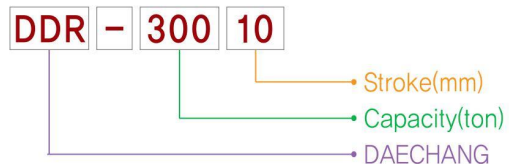
# DISC RAM



## ■ 특징 Teature

• Propeller를 가압하여 Fitting하는 Jack입니다.  
Disc Ram은 여러개를 사용하지 않는 한개로서 간단히 Propeller Fitting하는 Disc TYpe입니다.

## ■ How to understand Model No.



## ■ Specifications

Model	Capacity(ton)	Stroke(mm)	Closed Height(mm)	Ram Area(cm <sup>2</sup> )	Max Pressure(kg/cm <sup>2</sup> )	Operation
DDR-30010	300	10	80	428.5	700	≒109.4
DDR-50010	500	10	90	714.2	700	≒179.5
DDR-80010	800	10	100	1142.8	700	≒280.4
DDR-100012	1000	12	110	1428.5	700	≒428.4
DDR-150012	1500	12	130	2142.8	700	≒569.1

※ The above options are subject to change without prior notice

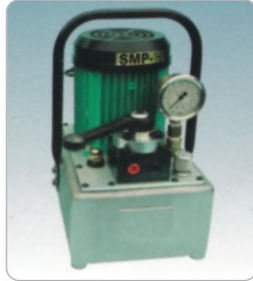
# ELECTRIC HYDRAULIC PUMPS



DMP 1/3



DMP 1/3



DMP 3/4



DMP 3/4



DMP 1-S



DMP 1-H



DMP 2-S / DMP 2-H

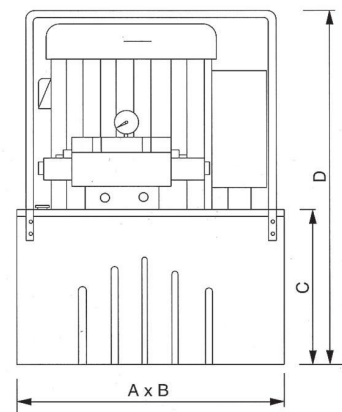


DMP 3-S / DMP 3-H



DMP 5-S / DMP 5-H

Model	Dimension	AxB	C	D
DMP 1/3		155×270	90	270
DMP 1/2		190×210	140	330
DMP 1		300×350	190	450
DMP 2		300×300	180	450
DMP 3		350×350	190	450
DMP 5		350×350	190	500



## Specifications

Model	Pressure Rating (kgf/cm <sup>2</sup> )		Output Flow Rate (l/min)		Voltage (v)	Electric Motor				Reservoir Capacity (liter)	Weight (kgs)
	High Pressure	Low Pressure	High Pressure	Low Pressure		(kw)	(pole)	(RPM)	(liter)		
DMP	720	50	0.2	2	220V, single phase	0.25	4	2800	3.5	5.5	8
DMP	720	50	0.5	3	220V, single phase	0.6	4	3400	3	5	20
DMP1	720	70	0.6	4/3.3	220V, single phase	0.75	4	1720	11	75.8	50
DMP2	720	70	1.8	9	220V, 3-phase	1.5	4	1720	23	34	55
DMP3	720	70	2.4	12	220V, 3-phase	2.2	4	1720	36	52	65
DMP5	720	70	3.0	12	220V, 3-phase	3.7	4	1720	48	69.5	70

※ The above options are subject to change without prior notice

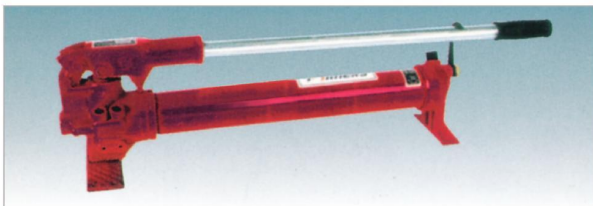
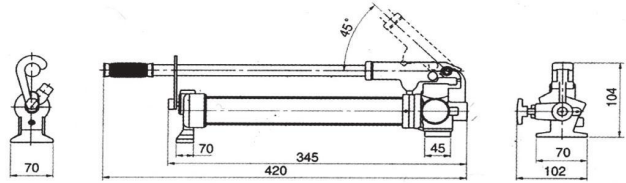
※ 2HP~5HP까지는 오일뱅크 용량은 조정 가능

# HAND PUMP

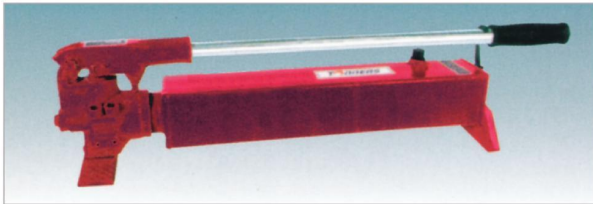
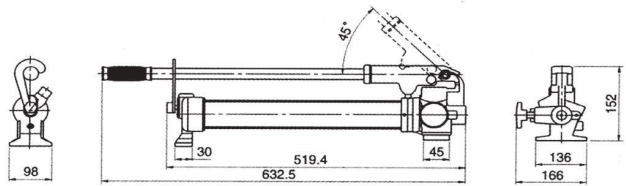
## ■ 최형치수도 DIMENSION



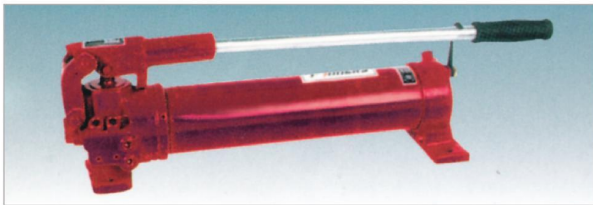
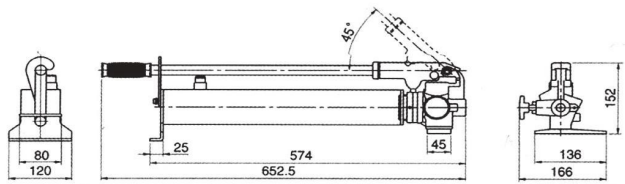
DP-16B



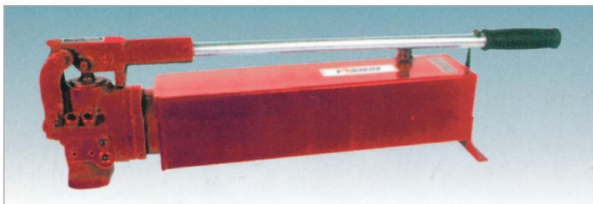
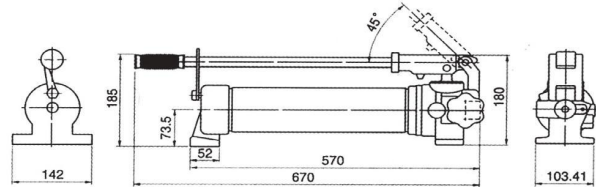
DP-1B



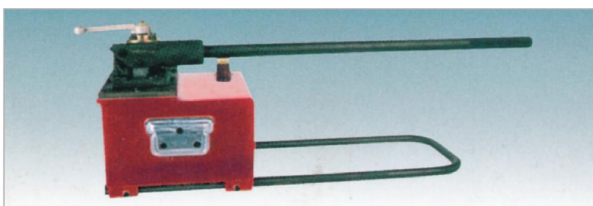
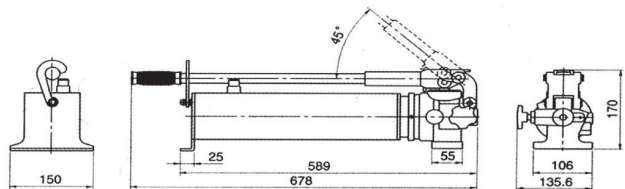
DP-2A



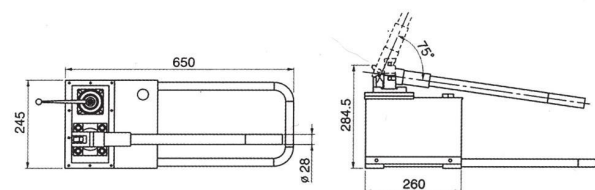
DP-2B



DP-3A



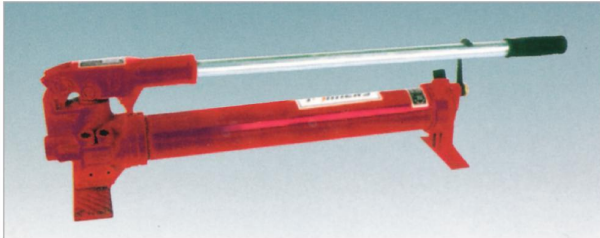
DP-3B



※ The above options are subject to change without prior notice



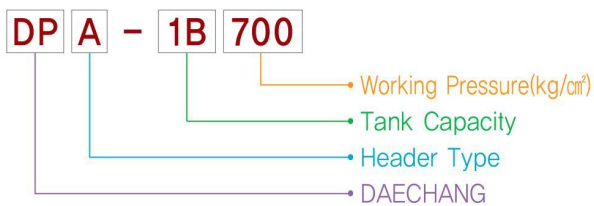
# HAND PUMP



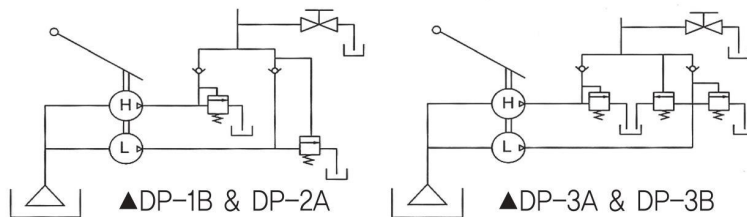
## ■ 특징 Teature

- Highest pressure portable pump.
- Used with single acting cylinder and all tools.
- Manual valve is attached to pump head when used with double acting cylinder.
- With hydraulic hose(1.8M) & Couper(male)
- 150kg/cm<sup>2</sup> on special order.
- 휴대폰 초고압 펌프
- 단동램 및 각종 공구류에 적용
- 북동램 사용시 pump head 부분에 Manual valve에 부착
- Hydraulic hose(1.8M) & Couper(male) 포함
- 150kg/cm<sup>2</sup> pump는 주문 제작 사양입니다.

## ■ How to understand Model No.



## ■ 회로도 CONNECTION



## ■ Specifications

### • Pump for 700(kg/cm<sup>2</sup>)

Model	Max. Working Pressure(kg/cm <sup>2</sup> )		Output Oil Capacity(cc/cycle)		Output Port	Tank Capacity(cc)		Weight (kg)
	High	Low	High	Low		Max. Capacity	Vaildity Capacity	
DP-16B	700	20	1.0	5	PT3/8"	280	220	3.1
DP-1B	700	20	2.3	13	PT3/8"	700	600	7.0
DP-2A	700	20	2.3	13	PT3/8"	2500	1800	9.6
DP-2B	700	20	4	31	PT3/8"	3000	2500	11
DP-3A	700	20	4	31	PT3/8"	4300	4000	13.5
DP-3B	700	30	15	90	PT3/8"	600	500	26.0

### • Subminiature Aluminum Pump

Model	Max. Working Pressure(kg/cm <sup>2</sup> )		Output Oil Capacity(cc/cycle)		Output Port	Tank Capacity(cc)		Weight (kg)
	High	Low	High	Low		Max. Capacity	Vaildity Capacity	
DPA-1B	700	30	2.3	13	PT3/8"	700	600	5.4
DPA-2A	700	30	2.3	13	PT3/8"	2500	1800	6.7
DPA-3A	700	30	14	31	PT3/8"	4300	4000	11

### • Pump for 1500(kg/cm<sup>2</sup>)

Model	Max. Working Pressure(kg/cm <sup>2</sup> )		Output Oil Capacity(cc/cycle)		Output Port	Tank Capacity(cc)		Weight (kg)
	High	Low	High	Low		Max. Capacity	Vaildity Capacity	
DHP-1A-1500	1500	20	2.3	13	PT3/8"	700	600	7.0
DHP-2A-1500	1500	20	2.3	13	PT3/8"	2500	1800	9.6

※ The above options are subject to change without prior notice

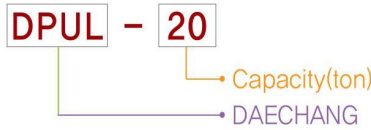
# GRIP PULLER



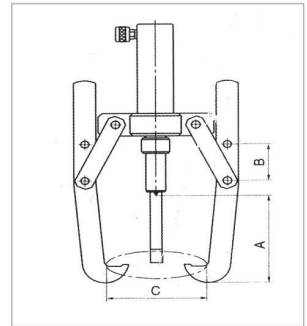
## ■ 특징 Teature

- Used for pulling Pully, Gear, Bearing or Wheel.
- Pully나 Gear, Bearing 및 Wheel 등을 빼는데 사용합니다.
- 강력한 Ram의 Pump Power를 이용하도록 제작되어 있으며 제품의 성능이 우수합니다.
- 산업 및 중공업 분야에 널리 사용됩니다.
- 물체와 작업상황에 따라 여러가지 형식을 선택할 수 있습니다.

## ■ How to understand Model No.



## ■ 외형치수도



## ■ Specifications

Model	Capacity	Max. Reach	Distance Between Hole		Max. Spread	Ram Stroke	Weight(kg)
		A	B	C			
DPUL-10	10	210	75	220	150	15	
DPUL-20	20	325	110	480	150	23,5	
DPUL-30	30	400	130	580	150	47,5	
DPUL-50	50	490	150	600	150	94,5	

# OIL-L-JACKS



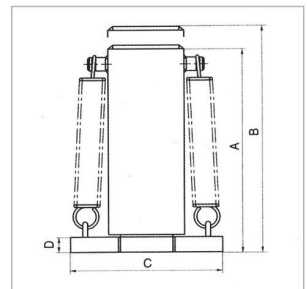
## ■ 특징 Teature

- Low clearance
- No external pump required.
- 틈새가 좁은 중량물을 들어 올릴 때 사용합니다.
- 자체 pump가 장착되어 있어 간단히 사용할 수 있습니다.

## ■ How to understand Model No.



## ■ 외형치수도



## ■ Specifications

Model	Cylinder Capacity		Strike(mm)	Retracted Height	Extended Height	Base Dimension	Base Thickness	Weight(kg)
	Up	Down		A	B	C	D	
DLJ-52,5	5	2,5	120	243	363	170×230	19	11,8
DLJ-105	10	5	150	290	440	188×260	22	19,5
DLJ-2010	20	10	160	333	493	245×280	28	37,8
DLJ-3015	30	15	160	353	513	273×308	32	42,2

※ The above options are subject to change without prior notice

# HYDRAULIC BEAM PUNCHERS

## ■ Beam Punch Series

Max. Punching Dia.  
▶ Ø31

• Max. Punching Th.  
▶ 20mm

Cylinder Capacity  
▶ 75tons

■ 6-Standard Models

■ Easy carrying with light weight & compact size

■ High efficiency & making smooth hole surface

■ Making bolt holes at I-Beam, H-Beam, Mild Steels,.. etc.



A065-1224



A070-1020



A070-1624 / B110-1624



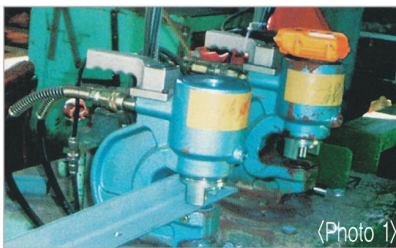
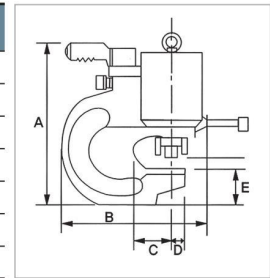
B110-2024



B110-2031

## ■ 외형치수도 DIMENSION

Model	A(mm)	B(mm)	C(mm)	D(mm)	E(mm)
A070-1020	310	220	70	25	80
A040-1020	240	190	40	18	52
A065-1224	310	230	65	22.5	80
A070-1624	322	260	70	28	90
B110-1624	380	350	110	28	130
B110-2024	380	350	110	28	130
B110-2031	430	430	110	28	180



⟨Photo 1⟩



⟨Photo 2⟩

⟨Photo 1⟩  
Working Test of A070-1624 with DMP-2

⟨Photo 2⟩  
Production Line for high quality and long life with self-developed solenoid valve & pump.

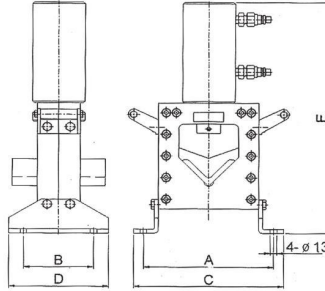
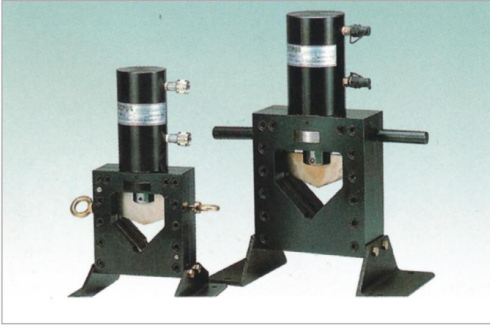
## ■ Specifications

Model	Cylinder Capacity(ton)	Acting Type	Max. Punching Th(m)	Max. Punching Dia(m)	Max. Punching Depth(m)	Punching Time(sec)			Weight(kg)
						DMP-1	DMP-2	DMP-3	
A070-1020	23	Single	10	20.5	70	-	-	-	13
A040-1020	23	Double	10	20	40	5	-	-	10.5
A065-1224	32	Double	12	24	65	6	4	3	17
A070-1624	45	Double	16	24	70	9	7	5	21
B110-1624	45	Double	16	24	110	9	7	5	28
B110-2024	60	Double	20	24	110	-	9	6	38
B110-2031	75	Double	20	31	110	-	10	7	90



# HYDRAULIC TOOLS

## ■ Angle Cutters



### ■ 특징 Teature

- Capacity : 20~50 tons
- Maximum Pressure : 700 kgf/cm<sup>2</sup>
- Angle cutters available with hand or electric pumps

### ■ Specifications

Model	Cylinder Capacity (ton)	Stroke(mm)	Oil Capacity (cc)	Max. angle	Pump	Dimension (mm)					Weight (kg)
						A	B	C	DI	EI	
DAC-50	20	45	150	50×50×6T	Hand Pump	200	120	240	180	366	18
DAC-75	30	65	288	75×75×10T	or	260	140	300	200	481	37
DAC-100	50	70	497	100×100×13T	Electric Pump	360	220	420	300	596	78

# HYDRAULIC SPLITTERS

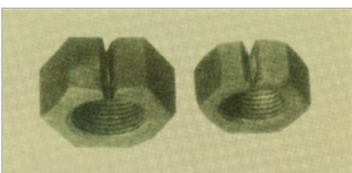
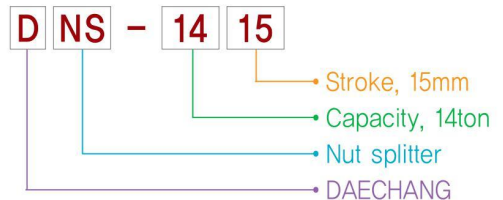
## ■ Nut Splitters



### ■ 특징 Teature

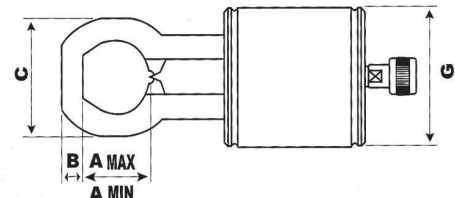
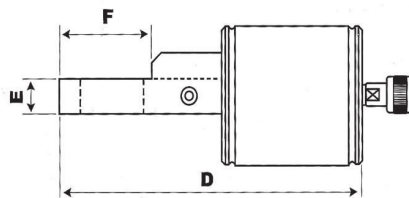
- Capacity : 14ton & 32.5ton
- Bolt Range : 14ton (M12~M24)  
32.5ton(M20~M33)
- Maximum Pressure : 700 kgf/cm<sup>2</sup>

### ■ How to understand Model No.



- Easily removing rusty nuts without damage to bolts

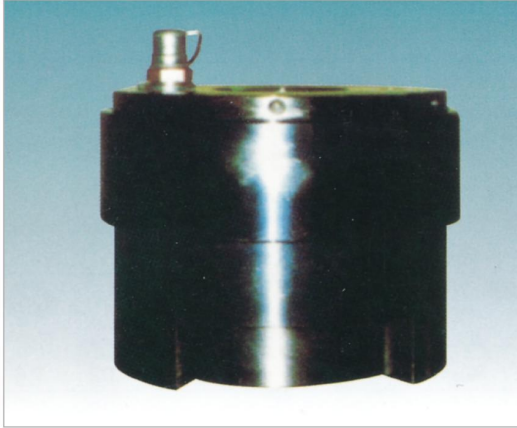
### ■ 외형치수도 DIMENSION



### ■ Specifications

Model	Cylinder Capacity (ton)	Stroke (mm)	Cylinder Effective Area(cm <sup>2</sup> )	Oil Capacity (cc)	Dimension								Weight (kg)
					A MAX (mm)	A MIN (mm)	B (mm)	C (mm)	D (mm)	E (mm)	F (mm)	G (mm)	
DNS-1415	14	15	21,2	31,8	45	15	12,5	67	221	23	62,5	78	5,2
DNS-32.520	32,5	20	46,5	93	62	39	19	98	278	29	85	115	12

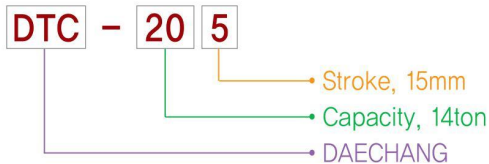
# BOLT TENSIONER



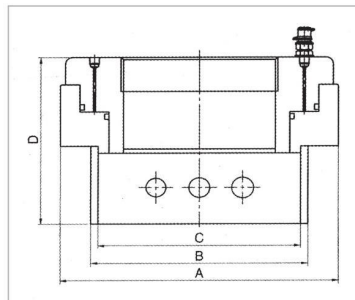
## ■ 특징 Feature

- 유압조정으로 임의의 조임력을 얻을 수 있습니다.
- Bolt를 직접 잡아당겨 조이므로 구부러지거나 비틀어지는 일이 발생하지 않으며, 나사부의 마찰(물어뜯기)이나 Bolt, Nut Flange면의 손상이 없습니다.
- Center Hole Type으로 되어 있기 때문에 Bolt 돌출길이에 관계없이 경량, Compact화 되어 있습니다.
- 동일 Flange에 복수대 사용을 함으로써 균일한 조임력을 갖습니다.
- Guide Cylinder 및 Socket의 교환으로 여러 종류의 Size의 Bolt에 적용됩니다.
- Unit는 용도에 따라 신진전동, 수동 Power Pack이 사용되므로 Hydraulic Wrench 와의 병용이 가능합니다.

## ■ How to understand Model No.



## ■ 외형치수도 DIMENSION



## ■ Specifications

Model	Thread		Max. Pressure (kg/cm <sup>2</sup> )	Plorce (ton)	Max. Stroke (min)	Dimension			
	ins	mm				A	B	C	D
DTC-M20	3/4"	20	1200	-	10	48	-	-	-
DTC-M24	7/8"	24	1200	20	10	78	70	54	120
DTC-M27	1"	27	1200	29.4	10	86	75	59	124
DTC-M30	1 1/8"	30	1200	29.4	10	97	82	61	124
DTC-M33	1 1/4"	33	1200	31.8	10	108	93	69	124
DTC-M36	1 3/8"	36	1200	-	10	-	-	-	-
DTC-M39	1 1/2"	39	1200	48	10	128	100	80	127
DTC-M42	1 5/8"	42	1200	57.6	10	136	112	85	130
DTC-M45	1 3/4"	45	1200	67.8	10	148	118	92	134
DTC-M48	1 7/8"	48	1200	72	10	152	120	97	137
DTC-M52	2"	52	1200	82.7	10	162	124	103	139
DTC-M56	2 1/4"	56	1200	116.5	10	182	145	113	145
DTC-M64	2 1/2"	64	1200	129.9	10	188	155	121	156
DTC-M72	1 3/4"	72	1200	150	10	195	173	133	160
DTC-M80	3"	80	1200	192	10	224	118	144	165
DTC-M90	3 1/2"	90	1200	249.6	10	250	210	162	185
DTC-M100	4"	100	1200	-	10	228	188	185	182

# PIPE BENDER



## ■ 특징 Feature

- 파이프 벤더는 1/2"~4"까지 수도관과 전산관을 현장에서 신속하게 굽힐 수 있도록 설계된 휴대장비입니다.
- 어떠한 곳에서도 사용할 수 있고 모든 파이프는 10ton~20ton까지의 실린더 힘으로 쉽게 휘어집니다.
- Shoe 선정은 수도관용과 전산관용이 있습니다.

## ■ How to understand Model No.



## ■ Specifications

Model	Capacity (inch)	Max. Bending Tinckness(mm)	Bending Angle(°)	Dimension(mm)	Tool Kit(Qt' y)	Cylinder Capacity(ton)	Weight (kg)
DPB-2	2"(50A)	3.8	90	750×700×250	1/2"-2"(6)	10	40
DPB-3	3"(80A)	4.5	90	850×1050×350	3/4"-3"(7)	15	60
DPB-4	4"(100A)	4.9	90	1150×1300×300	1' 1/4"-4"(6)	20	170

# HYDRAULIC SPLITTERS



## ■ 특징 Feature

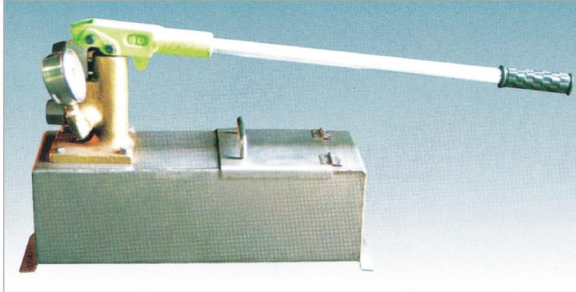
- 여러 종류의 Shoe가 있어 소형에서 대형까지 Pipe를 Bending 할 수 있습니다.

## ■ Specifications

Nominal Size in	Water Pipe(KS Pipe)				Electric Wire Pipe			
	Nominal	O.D(mm)	Tinckness(mm)	Radius(mm)	Nominal	O.D(mm)	Tinckness(mm)	Radius(mm)
1/2"	15	21.7(0.855")	2.8(0.111")	89.5(3.524")	16	21.0(0.827")	2.3(0.091")	90.0(3.544")
3/4"	20	27.2(1.071")	2.8(0.111")	100.5(4.0")	22	26.5(1.043")	2.3(0.091")	101.0(4.0")
1"	25	34.0(1.339")	3.5(0.138")	129.0(5.08")	28	33.3(1.311")	2.5(0.098")	129.4(5.095")
1 1/4"	32	42.8(1.682")	3.5(0.138")	162.5(6.398")	36	41.9(1.650")	2.5(0.098")	163.0(6.418")
1 1/2"	40	48.6(1.914")	3.5(0.138")	185.7(7.312")	42	47.8(1.882")	2.5(0.098")	186.0(7.323")
2"	50	60.5(2.382")	3.8(0.150")	211.8(8.339")	54	59.6(2.346")	2.8(0.110")	212.0(8.347")
2 1/2"	65	76(3.0")	4.2(0.165")	320(12.598")	70	75.2(2.961")	2.8(0.110")	451.0(17.756")
3"	80	89.1(3.5")	4.2(0.165")	425(16.732")	82	87.9(3.461")	2.8(0.110")	500.0(19.015")
4"	100	114.3(4.5")	4.5(0.177")	650(25.59")	104	113.7(4.476")	3.5(0.138")	850.3(3.46")



# WATER PRESSURE TESTER



## ■ 특징 Feature

- 소형 경량으로 휴대가 용이하다
- 사용압력 100kg/cm<sup>2</sup>~1000kg/cm<sup>2</sup>까지 여러 형식이 있다.

이 수동 수압테스트기는 오일탱크가 스텐레스이며 펌프 BODY는 ALBC 재질로 제작되어 장기간 사용시에도 녹이 슬지 않는 제품입니다.

## ■ Specifications

Model	Capacity(kg/cm <sup>2</sup> )	Piston Dia(mm)		Stroke(mm)	Operation
		High Pressure	Low Pressure		
DWT-W1	100	16	38	50	Hand
DWT-W2	300	12	38	50	Hand
DWT-W3	500	10	38	50	Hand
DWT-W4	700	10	38	50	Hand
DWT-W5	1000	10	38	50	Hand
DWT-H1	100	16	-	50	Hand
DWT-H2	300	12	-	50	Hand
DWT-H3	500	10	-	50	Hand
DWT-H4	700	10	-	50	Hand
DWT-H5	1000	10	-	50	Hand

# HYDRAULIC TOOLS

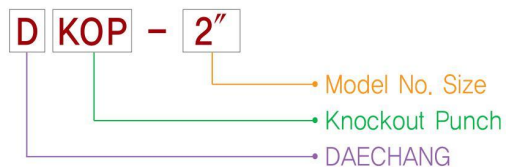
## ■ Hydraulic Knockout Punch



## ■ 특징 Feature

- Punching Capacity : 1/2"~4"
- Cylinder Capacity : 10tons
- Maximum Pressure : 700(kg/cm<sup>2</sup>)

## ■ How to understand Model No.

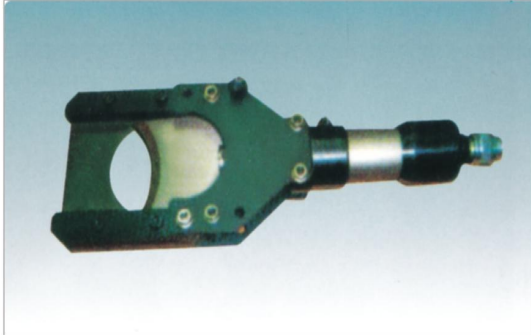


## ■ Specifications

Model No.	Capacity(tons)	Punching Tinckness(mm)		Max. Punching Dia(mm)	Weight(kg)
		SS400 이하	SUS		
DKOP-2	10	3.2	1.6	1/2"-2"	14
DKOP-4	10			1/2"-4"	22

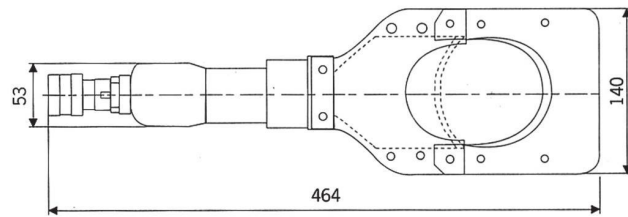
Size	Punching Dia Ø	Cable O-D Ø	Screw	TKOP-15
B16(1/2")	21.8	21.0	7/16"×20S	After make a hole with a Ø11mm srill, B16(1/2) punch is used to enlarge drill hole.
B22(3/4")	27.6	26.5		
B28(1")	34.1	33.3		
B36(1 1/4")	42.7	41.9		
B42(1 1/2")	48.7	47.8		
B54(2")	60.5	59.6		
B70(2 1/2")	76.1	75.5		
B82(3")	88.9	87.9		
B104(4")	115.5	113.4		

# CABLE CUTTER



## ■ 특징 Feature

- 전선이나 통신용 Cable을 절단하는데 사용합니다.
- 단식은 자체 pump가 장착되어 있어 간단히 사용할 수 있습니다.
- 분리식은 pump와 hose는 별도로 결합하여 사용하므로 보다 큰 Size를 절단할 수 있습니다.



## ■ Specifications

Model	Cable Max.Cutting	Wire Sizw(mm)		Operation	Weight(kg)
		Barte Copper	Bare Aluminum		
DCC-75W	85	28.8	37.8	Separation System	6.5
DCC-100W	100	41.6	46.2	Separation System	12.5

# TERMINAL CRIMPING PRESS



## ■ 특징 Feature

- 전선이나 통신용 Cable을 절단하는데 사용합니다.
- 단식은 자체 pump가 장착되어 있어 간단히 사용할 수 있습니다.
- 분리식은 pump와 hose는 별도로 결합하여 사용하므로 보다 큰 Size를 절단할 수 있습니다.

## ■ Specifications

Model	Terminal Cop Runge	Capacity (tons)	Standard		Weight(kg)
			Male	Female	
DTC-150	8~150	10	14~22 36~70 80~150	14~38 60~70 80~100 150	4.4
DTC-325	60~325	20	60~100 150~325	60~80 100~150 200~250 325	8.5
DTC-500	8~500	30	육각	육각	12.5

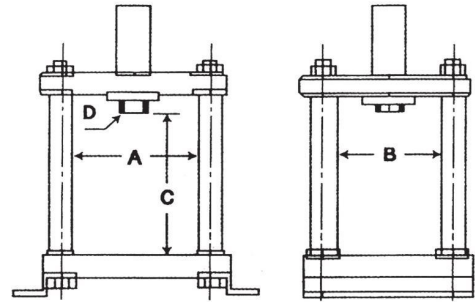
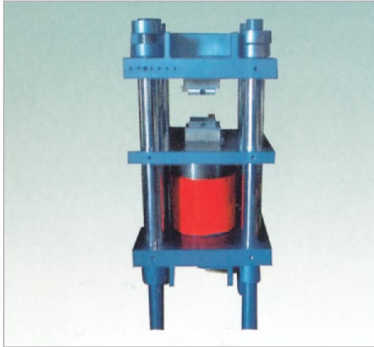


## ■ Specifications

Model	Female Dies	Male Dies	Wire Size(mm)
14	14	8~14	10.52~16.78
22	22	22~38	16.78~26.66
29	37		26.66~42.42
60	60	60~100	42.42~60.57
70	70		60.57~76.28
80	80		76.28~96.30
100	100		96.30~117.20
150	150	150~325	117.20~152.05
190	190		152.05~192.60
240	240		192.60~242.27
325	325		242.27~325.00

# HYDRAULIC SHOP PRESS

## ■ Wire Rope Swage Press    ■ Shop Press (TSP)



### ■ Specifications

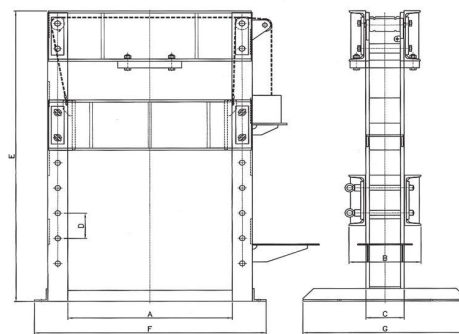
Model	Capacity (tons)	Stroke(mm)	Dimension				Weight(kg)	Cylinder	Pump
			A	B	C	D			
DSP-10	10	150	300	250	300	M36×P2,0	140	DSP10150	hand Pump or Electric Pump
DSP-20	20	150	350	250	390	M56×P2,0	240	DSP20150	
DSP-30	30	150	400	300	400	M62×P2,0	360	DSP30150	

## ■ Shop Press



### ■ 특징 Feature

- Capacity : 20~200tons
- Maximum Pressure : 700(kg/cm<sup>2</sup>)
- When pulling and pushing of bearings, gears, couplings, and assembling of products



### ■ Specifications

Model	Cylinder (tons)	Stroke (mm)	Dimension							Weight (kg)	Pump
			A	B	C	D	E	F	G		
DSPM-20	20	200	550	280	125	150	1600	860	700	180	hand Pump or Electric Pump
DSPM-30	30	200	640	335	150	150	1730	1000	770	320	
DSPM-50	50	200	900	390	210	150	1830	1270	900	530	
DSPM-100	100	200	1000	460	260	200	1930	1440	900	940	
DSPM-150	150	200	1200	550	350	200	2220	1760	1300	1450	
DSPM-200	200	200	1200	550	350	200	2220	1760	1300	1450	



# ACCESSORIES

## Solenoid Valves



### How to understand Model No.

**KSV 3 G - 6 - F 2**

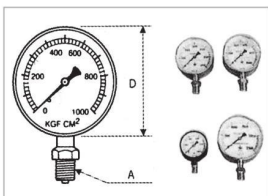
- Rated voltage 1...A.C 110V 2...A.C 200V 3.8...A.C 380V
- Type of spool
- Nominal port diameter(Ø4, Ø6, Ø8)
- To be connected with G...Subplate T...thread connected
- Number of position 2...two positions 3...three positions
- Model of Solenoid...KSV or OLSV

### Specifications

Model Items	Working pressure(kgf/cm <sup>2</sup> )	Allowable Flow(l /min)	Pilot pressure (kgf/cm <sup>2</sup> )	Frequent time in Switching per min	Continal Operation(min)	Weight(kg)	Use-Application
KSV-6	720	8	-	60	*	2.6	for tool
OLSV-4	720	4	-	4	30	13	for Heavy
OLSV-9	720	20	10-11	4	30	35	duty

\* Do not KSV-type for the use application of retaining applied pressure for more than one minute because spool is subject to "HYDRAULIC LOCK"

## Pressure Gauges



### How to understand Model No.

**PG - \* X \***

- Max. graduation (kgf/cm<sup>2</sup>)
- Dia. of pressure gauges(mm)

Pressure gauges

Notice :  
The Red Line shows danger range of pressure

### Specifications

Model Items	Pressure		D(mm)	A
	Working (kgf/cm <sup>2</sup> )	Graduation (kgf/cm <sup>2</sup> )		
PG100×600	450	600	103	PF1/2
PG75×1000	720	1000	78	PF3/8
PG100×1000	720	1000	103	PF1/2
PG125×2500	2000	2500	128	PF1/2

## Pressure Switches



### Specifications

Model Items	Pressure Adjusting (kgf/cm <sup>2</sup> )	Differential Pressure(kgf/cm <sup>2</sup> )	Allowable of set Pressure(kgf/cm <sup>2</sup> )	Load Contact	Weight(kg)	Connection thread(A)
DSP-350	100~800	35~70	±10	1a, 1b	0.4	PF3/8
DSP-700						
DSP-2000						
CQ-20	100~720	30~50	±8	1a, 1b	1.0	PF3/8
BA-300-2	200~2000	60~100	±15	1a, 1b	1.2	PF1/2

## D-type Manual Control Valves



### How to understand Model No.

**SDV - \* \***

- A : General type
- B : Outdoor type
- N : A combined indoor type and outdoor type

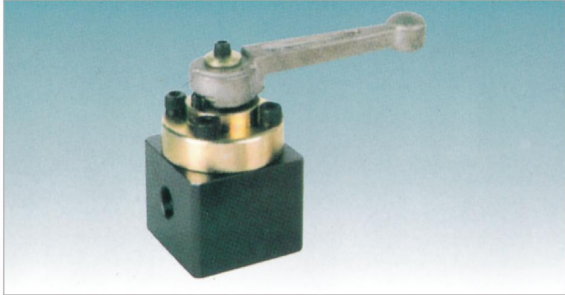
Nominal port diameter

D-type manual control valve

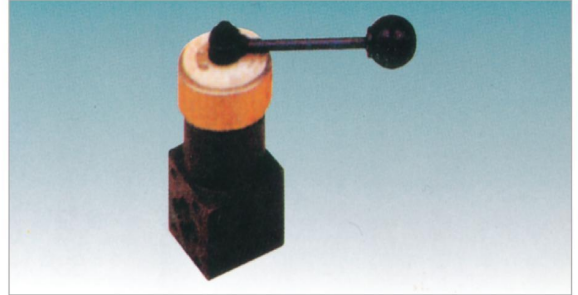
### Specifications

Model Items	Neutral	Max Working Pressure (kgf/cm <sup>2</sup> )	Rating Flow(l /min)	Max. Oil Flow(l /min)	Allowable Back Pressure (kgf/cm <sup>2</sup> )	Weight(kg)	
DDV-3	N	720	2	3	50	1	
	A					2.5	
DDV-6	B	720	8	16	20	3.0	
	N					2.4	
	G					2.6	
DDV-9	A	720	20	40	20	6	
	B					6.5	
	N					5.5	
DDV-12	A	720	40	60	20	8	
	B					8	
DDV-16	A	720	80	120	20	11	
	B					11	
DDV-19	A	600	120	180	20	23	

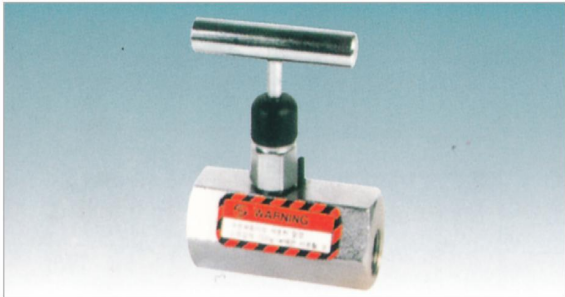
# ACCESSORY



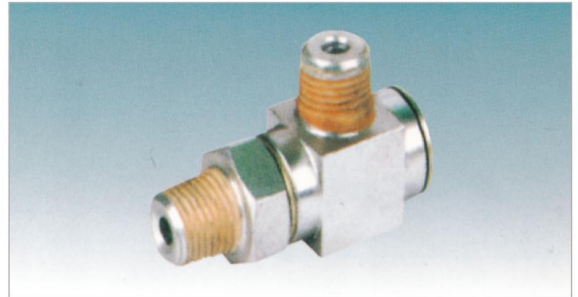
① Directional Control Valve



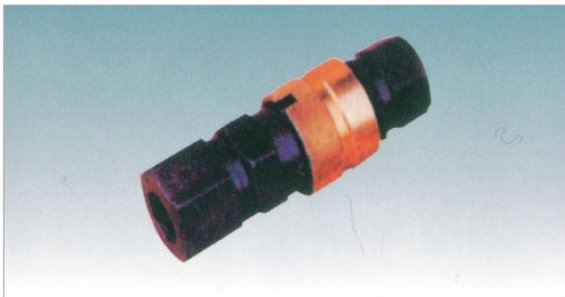
② Control Valve



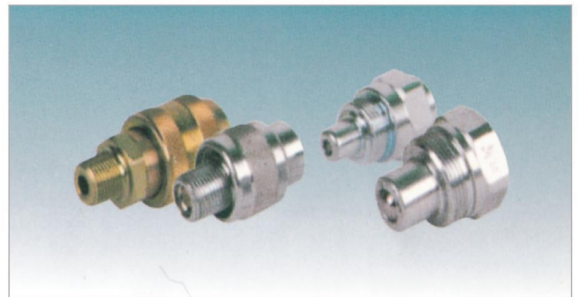
③ Shut-Off Valve



④ Rotary Joint



⑤ One Touch Coupler

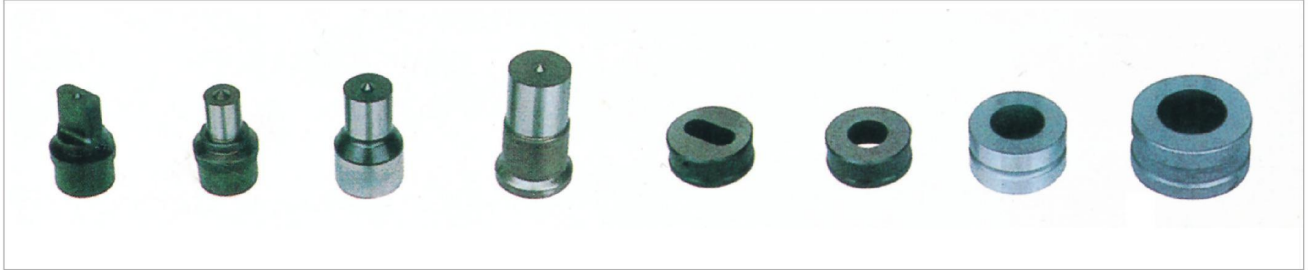


⑥ Coupler

## ■ Specifications

Model	
① Directional Control Valve	General used in hand pump and electric pump. (Single acting and Double acting) 수동펌프 및 전동펌프에 범용으로 사용합니다.(단동 및 복동 겸용)
② Control Valve	General used in hand pump and electric pump. (Single acting and Double acting) 수동펌프 및 전동펌프에 범용으로 사용합니다.(단동 및 복동 겸용)
③ Shut-Off Valve	Control the speed of cylinder by controlling oil quantity. 유량을 조절하여 실린더 속도를 조절합니다.
④ Rotary Joint	Prevent to get twitted. 회전연결 조인트로 연결되어 호스의 꼬임을 방지합니다.
⑤ One Touch Coupler	One Touch로 체결분리가 용이하여 사용하기가 편리합니다.
⑥ Coupler	Possible to quick couple. In separation, no oil leak. 신속히 체결할 수 있는 제품으로 내부에 체크북이 들어 있어 분리시 오일이 흐르지 않아 사용하기가 편리합니다.

# HTDRAULIC PUMP PUNCHER



Model	펀치	다이	금형캡	특수금형
SD1624				
SD2024				

## ■ 표준금형 사이즈

원형Ø	최소 지름Ø ~ 최대 지름Ø									
장공 mm (SD1624) (SD1224)	8×20	9×20	10×18	10×20	10×22	11×20	11×24	11×25	12×20	12×24
	12×25	13×25	14×20	14×24	14×25	15×20	15×24	15×25	16×24	16×25
	18×24	18×25	19×25	20×25	22×25					

원형Ø	최소 지름Ø ~ 최대 지름Ø													
원형Ø (SD2024)	6	6.5	7	8	9	10	11	12	13	14	14.5	15	16	17
	17.5	18	18.5	19	20	20.5	21	22	22.5	23	23.5	24	24.5	25
	25.5	26	26.5	27	27.5	28								

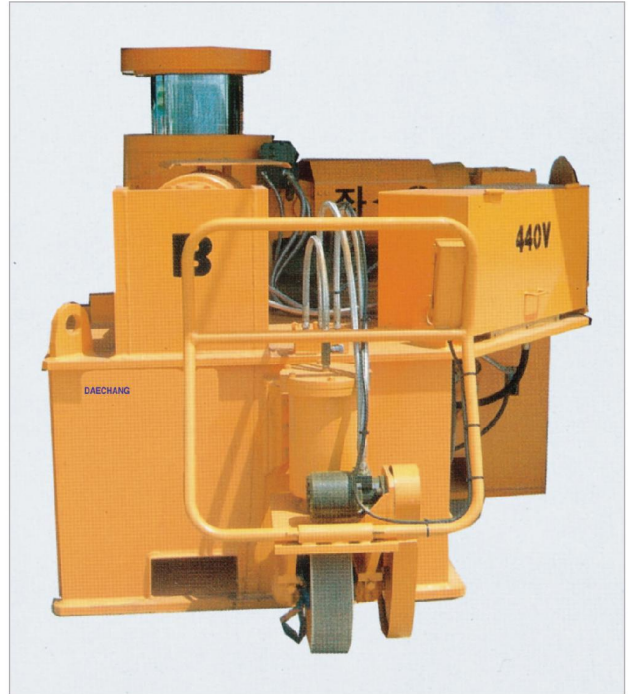
원형Ø	최소 지름Ø ~ 최대 지름Ø									
장공 mm (SD2024)	12×25	12×28	14×18	14×24	14×28	15×25	15×28	16×25	16×28	18×25
	18×28	19×25	19×28	20×25	20×28	22×25	22×28			



# BLOCK LIFTER PART



BLOCK LIFTER



BLOCK LIFTER

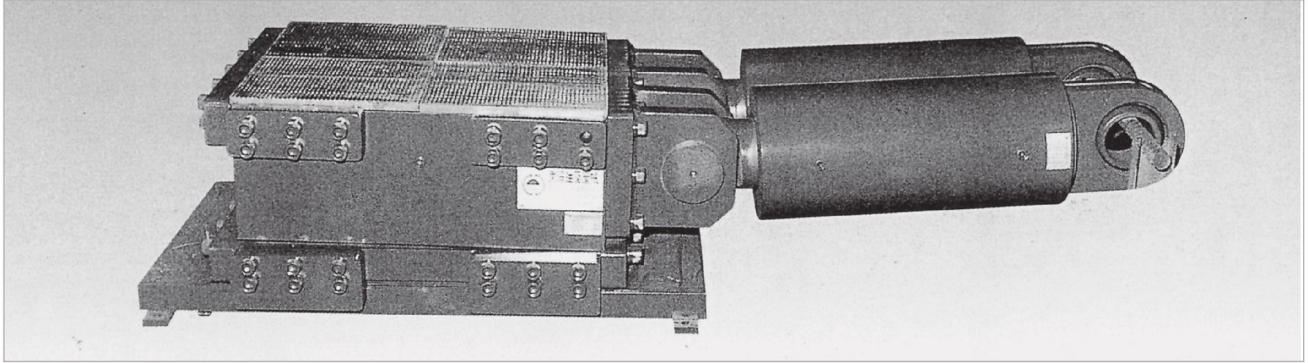


SAVE ALL & PETER



SAVE ALL & PETER

# LAUNCHING JACK



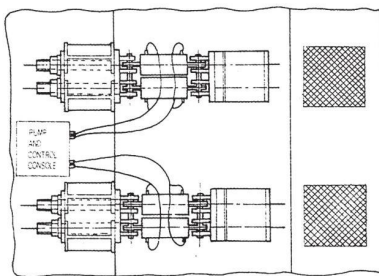
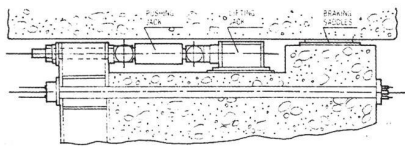
## ■ Specifications

No	Description	Capacity		Remarks
1	Power unit	500ton	500kgf/cm <sup>2</sup> ×330 /min	Motor 50hp
		800ton	500kgf/cm <sup>2</sup> ×540 /min	Motor 60hp
2	Lifting jack	500ton	∅350×70ST	Single Acting
		800ton	∅450×70ST	Single Acting
3	Pushing jack	100ton	∅160×300ST	Double Acting
		220ton	∅230×300ST	Double Acting

## ■ 밀어내기 방법(Pushing Method)

2~3개의 수직잭과 6~4개의 수평잭으로 구성되는 본 방식은 수직잭으로 상부 구조물을 올려서 교량이 Braking Saddle로 부터 격리된 후 수평잭으로 밀어 교량을 압출시키는 공법입니다.

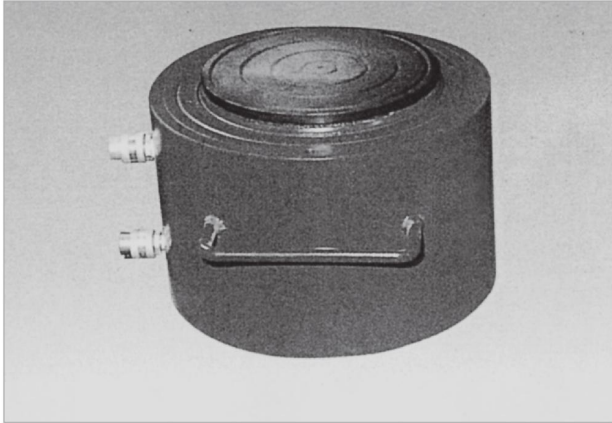
Launching 속도는 평균 10m/h 정도이며 길이가 0~25m의 보통 Segment는 약 2시간에 압출시킬 수 있습니다.



## HYDRAULIC UNIT



# FLAT JACK



## ■ Specifications

Part	Model No	DHJ-300	DHJ-500	DHJ-800
Capacity(ton)		300	500	800
Pressure(kg/cm <sup>2</sup> )		700	700	700
Min Heighe(mm)		180	230	300
Max Heighe(mm)		230	280	370
Stroke(mm)		50	50	70
Weight(kg)		200	280	350



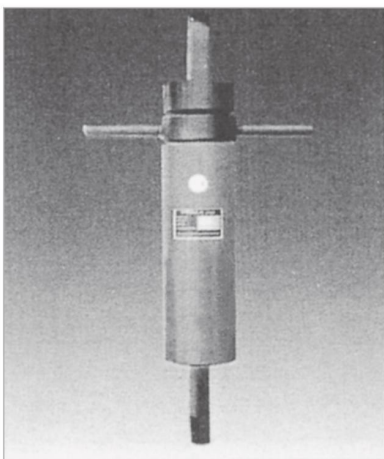
# I.L.M MOULD SYSTEM



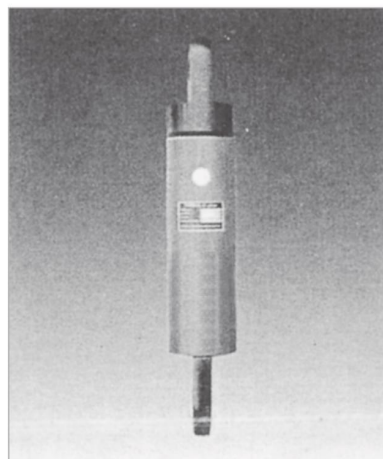
- 설치위치 : Bottom Form(Jack 1)
- Jack 종류 : Single Screw-  
Acting Jack
- Working Pressure : 700kg/cm<sup>2</sup>
- Jack Capacity : 60ton
- Jack Stroke : 100mm



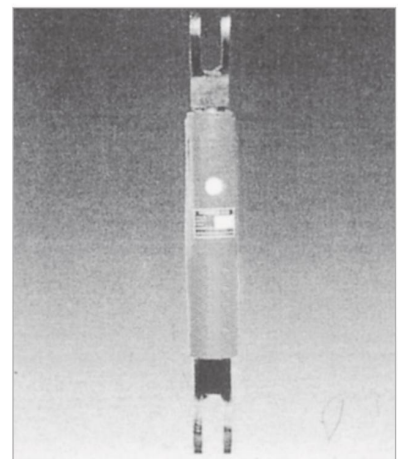
- 설치위치 : Inner Form(Jack 2)
- Jack 종류 : Single Screw-  
Acting Jack
- Working Pressure : 700kg/cm<sup>2</sup>
- Jack Capacity : 35ton
- Jack Stroke : 150mm



- 설치위치 : Lateral Form(Jack 3)
- Jack 종류 : Single Screw-  
Acting Jack
- Working Pressure : 700kg/cm<sup>2</sup>
- Jack Capacity : 35ton
- Jack Stroke : 150mm



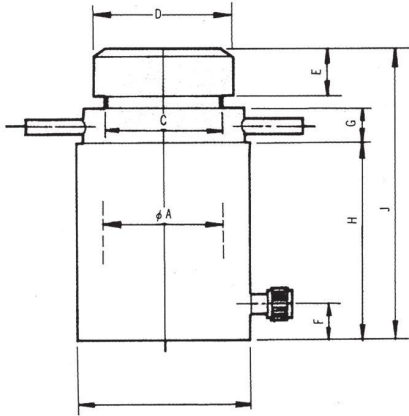
- 설치위치 : Lateral Form(Jack 3)
- Jack 종류 : Double Screw-  
Acting Jack
- Working Pressure : 700kg/cm<sup>2</sup>
- Jack Capacity : 35ton
- Jack Stroke : 150mm



- 설치위치 : Inner Form(Jack 4)
- Jack 종류 : Double Screw-  
Acting Jack
- Working Pressure : 700kg/cm<sup>2</sup>
- Jack Capacity : 10ton
- Jack Stroke : 200mm

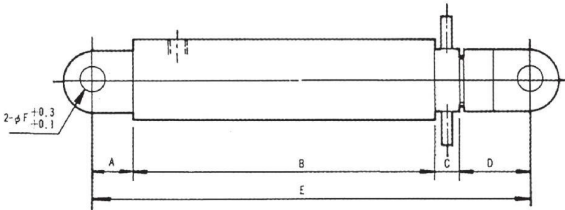
# MOULD에 사용되는 유압시스템

## ■ Jack 1.2 Dimensions

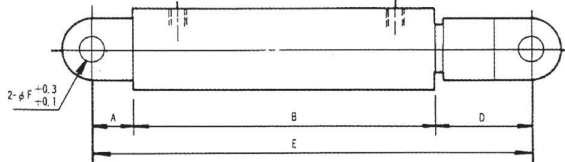


## ■ Jack 3 Dimensions(35ton×150st)

Single-Acting Jack Without Nut

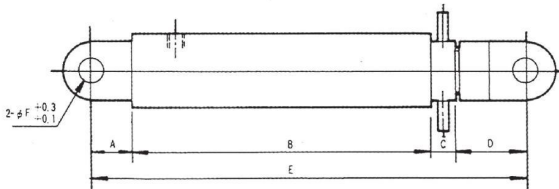


Double -Acting Jack

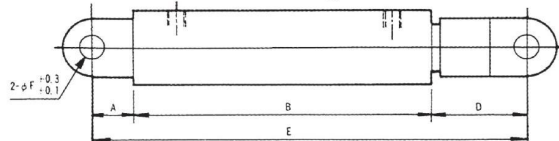


## ■ Jack 4 Dimensions(10ton×200st)

Single-Acting Jack Without Nut



Double -Acting Jack



## ■ Specifications

Part	Model	Jack 1-60ton×100st	Jack 1-35ton×150st
Working Pressure kg/cm <sup>2</sup>		700	700
Cylinder Bore I.D	∅A	105	90
Cylinder O · D	∅A	152	132
Rod Screw	C	사각나사 95×P6	사각나사 95×P6
Head Dia	∅D	118	98
Head Thickness	E	50	50
Port Position	F	35	35
Lock Nut Thickness	G	40	40
Cylinder Length	H	206	206
Min. Height J		300	300
Weight	kg	45	35

Mould Jack 3.4의 경우에는 전체적인 레벨리 맞지 않을 때 또는 내부 Mould의 시멘트와 구조물이 정착되어 떨어지지 않을 경우를 대비하여 단동과 복동을 혼용하여 배치를 해야합니다.

## ■ Specifications

Part	Model	Single-Acting Jack	Single-Acting Jack
Cylinder Capacity(ton)		35	35
Cylinder Stroke(mm)		150	150
Cylinder Bore I.D (∅)		90	90
Cylinder Bore O · D (∅)		132	132
A		60	60
B		315	315
C		40	40
D		100	100
E		515	515
∅F		36	36

## ■ Clevis Dimensions

	10ton	25ton
A	-	35
B	30	-
C	16	-

## ■ Specifications

Part	Model	Single-Acting Jack	Single-Acting Jack
Cylinder Capacity(ton)		10	10
Cylinder Stroke(mm)		200	200
Cylinder Bore I.D (∅)		70	70
Cylinder Bore O · D (∅)		112	112
A		60	60
B		320	350
C		30	-
D		100	100
E		570	570
∅F		32	32



Hydraulic Power for Industry



**DAECHANG**

Daechang Hydraulic Machinery Co.,Ltd

부산시 사상구 사상로 333번길 41

Tel. 051)314-9595 / 051)303-9597~8

Fax. 051)303-9596